

Product Guide

**HEAT EXCHANGER PACKAGES
HEVAMOD & HEVAMOD L PACKAGES**

Inventive Engineering



HevaMod Heat Exchanger Packages



Our HevaMod range of heat exchanger packages are designed with the customer in mind, offering various options to suit each application. The units are supplied as standard with gasketed plate heat exchangers and range from 50 kW up to 2,000 kW as standard, with larger units available if required. The HevaMod units are designed to operate with a primary water medium and have the following options:

HM - 3 port primary control valve and fixed speed pump (single or twin head)

HME - Variable speed primary pump c/w shut-off valve

HMP - 2 or 3 port primary control valve with no pump

The Arbe range of HevaMod packaged plate heat exchangers offer a compact and economical solution for heat transfer requirements. Used to provide heat generation in addition to providing pressure breaks in a system, the HevaMod range is a simple solution to any project specifications, which can be adapted to suit specific requirements with additional equipment integrated within the package.



Dedicated ranges for domestic hot water production, heating water production (LTHW, MTHW & HTHW) & chilled water production
Standard units with duties from 30 kW to 2000 kW, with special models available up to 10,000 kW

Standard units with PID controls, with BACnet & PLC control options also available

Small unit size with high heat transfer capacity

High resistance to pressure and temperature fluctuations

Cost efficiency

Stainless steel connections

Easy installation

Applications:

Domestic hot water

Heating systems (LTHW, MTHW & HTHW)

Cooling systems

Solar and Geothermal Heating

Industrial Process Heat recovery

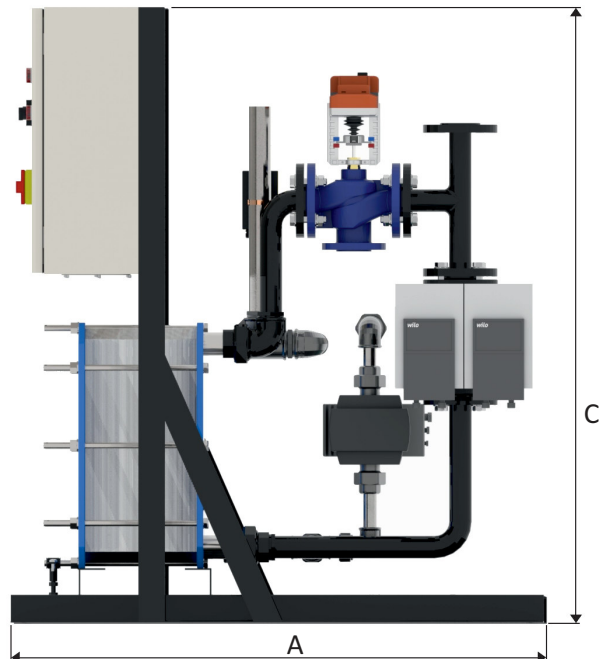
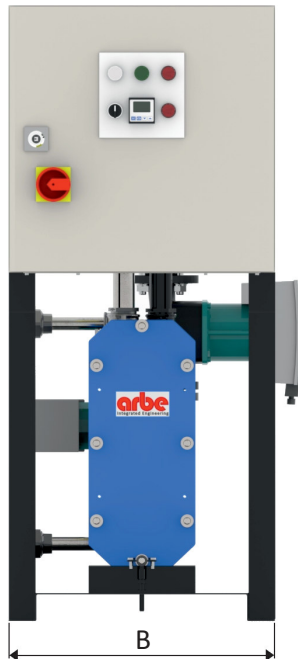
Condensers and evaporators in refrigeration systems

Oil coolers

Close approach fluid-to-fluid heat transfer



HevaMod Heat Exchanger Packages



Model	Duty kW	Primary Flow Litres/Second	Secondary Flow Litres/Second	Pri Excess Pump Pressure	Sec. Pressure Drop (kPa)	Dimensions		
						A	B	C
HM3A50-**F	50	0.40	0.24	18.0	3.9	600	410	1100
HM3A75-**F	75	0.60	0.36	16.0	4.8	600	410	1100
HM3A100-**F	100	0.80	0.48	15.0	5.3	600	410	1100
HM3A125-**F	125	1.00	0.60	16.0	5.8	600	410	1100
HM3A150-**F	150	1.20	0.72	15.0	6.2	600	410	1100
HM3A200-**F	200	1.60	0.96	18.0	6.8	600	410	1100
HM3A250-**F	250	1.99	1.20	20.0	7.4	600	410	1100
HM3A300-**F	300	2.39	1.44	19.0	8.5	600	410	1100
HM3A350-**F	350	2.79	1.68	22.0	9.1	600	410	1100
HM3B400-**F	400	3.19	1.91	16.0	19.0	700	410	1450
HM3B450-**F	450	3.58	2.15	16.0	18.2	700	500	1450
HM3B500-**F	500	3.98	2.39	18.0	18.6	700	500	1450
HM3B600-**F	600	4.78	2.87	20.0	17.6	700	500	1450
HM3B700-**F	700	5.57	3.35	15.0	19.8	700	500	1450
HM3B800-**F	800	6.37	3.82	16.0	19.6	700	500	1450
HM3B900-**F	900	7.16	4.30	18.0	19.2	700	500	1450
HM3B1000-**F	1000	7.96	4.78	19.0	19.3	700	500	1450
HM3B1100-**F	1100	8.76	5.26	22.0	19.4	1200	650	1450
HM3B1250-**F	1250	9.95	5.97	21.0	18.6	1200	650	1450
HM3B1500-**F	1500	11.94	7.16	20.0	19.4	1200	650	1450
HM3B1750-**F	1750	13.93	8.36	16.0	18.0	1200	650	1450
HM3B2000-**F	2000	15.92	9.55	18.0	18.5	1200	650	1450

Selection

**F - Refers to pump selection

- └─ F - refers to fixed speed pump : E refers to electronic pump
- └─ * - 0=no secondary pump : 1=single secondary pump : 2=twin secondary pump
- └─ * - 0=no primary pump : 1=single primary pump : 2=twin primary pump

HevaMod-L Heat Exchanger Packages



Our HevaMod-L range of heat exchanger packages are designed for economical requirements, offering a simple and effective solution. The units are supplied as standard with gasketed plate heat exchangers and range from 50 kW up to 2,000 kW as standard, with larger units available if required. The HevaMod units are designed to operate with a primary water medium and are supplied with an electro-proportional 3-port primary control valve and fixed speed pump (single or twin head) and can be supplied with or without a secondary shunt pump

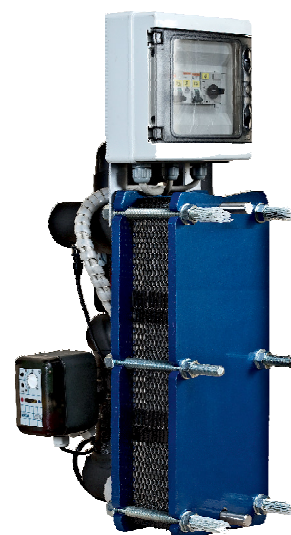
The Arbe range of HevaMod-L packaged plate heat exchangers offer a compact and economical solution for heat transfer requirements. Used to provide heat generation for potable water solutions, the HevaMod-L range is a simple solution to any project specifications, which can be adapted to suit specific heat output requirements

- Dedicated range for domestic hot water production
- Standard units with duties from 52 kW to 582 kW
- Standard units with electrical motor protection and temperature control by the electro-proportional control valve with a programmable anti-legionella pasteurisation setting
- Small unit size with high heat transfer capacity
- High resistance to pressure and temperature fluctuations
- Cost efficiency
- Stainless steel connections
- Easy installation

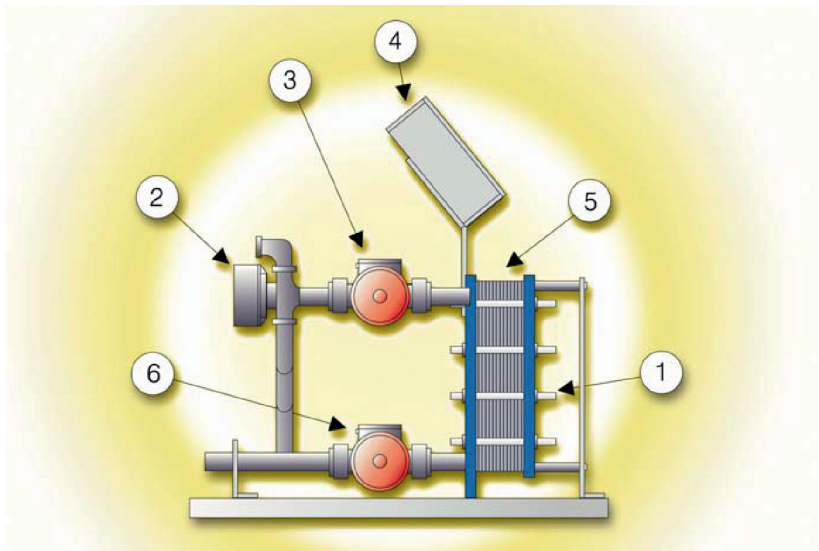
Applications:

- Domestic hot water
- Process hot water

Please contact our technical office with any technical queries, with regards to applications and installation



HevaMod-L Heat Exchanger Packages



Components:

1. Heat exchanger frame
2. Mixing valve
3. Primary pump
4. Electrical panel
5. Heat exchanger plates
6. Secondary pump

Dimensions:

- A - Overall length
- B - Overall height
- C - Overall width

Model	Duty kW	Primary Flow Litres/Second	Secondary Flow Litres/Second	Pri Excess Pump Pressure	Sec. Pressure Drop (kPa)	Dimensions		
						A	B	C
HM-L-43-15-***	53	0.63	0.25	12.0	10.0	700	420	800
HM-L-43-21-***	105	1.25	0.50	14.0	10.0	700	420	800
HM-L-43-27-***	126	1.50	0.60	15.0	10.0	700	420	800
HM-L-43-33-***	152	1.81	0.73	16.0	10.0	700	420	800
HM-L-43-41-***	177	2.11	0.85	15.0	10.0	700	420	800
HM-L-150-18-***	233	1.85	1.11	13.0	13.0	1000	700	1200
HM-L-150-21-***	291	2.31	1.39	14.0	13.0	1000	700	1200
HM-L-150-25-***	349	2.77	1.67	14.0	14.0	1000	700	1200
HM-L-150-29-***	408	3.24	1.95	14.0	14.0	1000	700	1200
HM-L-150-33-***	466	3.70	2.23	16.0	18.0	1000	700	1200
HM-L-150-37-***	524	4.16	2.50	18.0	18.0	1000	700	1200
HM-L-150-41-***	582	4.62	2.78	18.0	19.0	1000	700	1200

Selection

**F - Refers to pump selection

- F - refers to fixed speed pump
- * - 0=no secondary pump : 1=single secondary pump
- * - 0=no primary pump : 1=single primary pump : 2=twin primary pump

Welcome to Arbe Integrated Engineering

Arbe Integrated Engineering offer a range of products and services for the HVAC building services industry, ranging from bare heat exchangers and storage cylinders to fully packaged plantrooms and associated equipment. With over 20 years of design experience, our design and technical team can offer a complete solution for a wide range of project requirements.

Seamless Integration:

With our next generation range of equipment, our products offer complete integration with renewable and future energies, ensuring all available energy is utilised, reducing fossil fuel usage. In addition, our HevaSys products offers a unique next generation range of equipment with integral BMS style controls that can be adapted to any installation and can provide a standalone management system for buildings where the heating and hot water generation is relatively small, such as a leisure centre or a school.

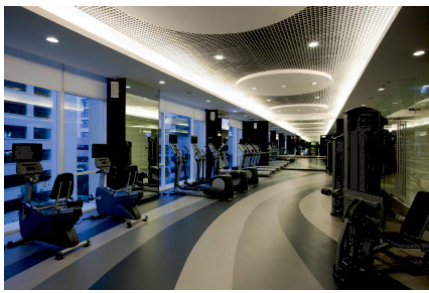
Inventive Engineering:

In addition to our standard equipment, including heat exchangers, storage calorifiers and packaged solutions, we also design and manufacture bespoke equipment to end user or consultant specifications and we carry out extensive research and development to invent new products and enhance current designs.

Application Solutions:

With our complete range of products, we have solutions to cover most applications. With our ability to carry out complete bespoke design, we have a solution for each and every project requirement. Our end users include:

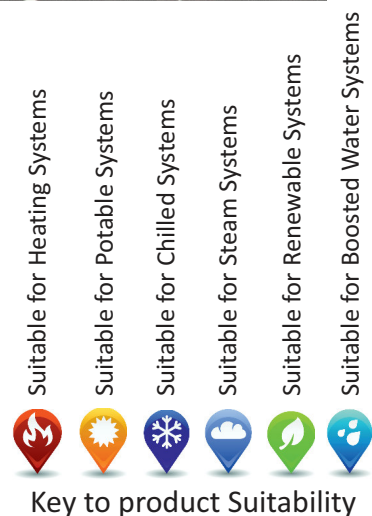
- Hotels
- Schools
- Universities
- Leisure Centres & Gyms
- Hospitals



Products Include:

Calorifiers
Indirect Cylinders
Direct Cylinders
Thermal Stores
Pressure Vessels
Plate Heat Exchangers
Braze Heat Exchangers
Shell & Tube Exchangers
Heat Exchanger Packages

TwinHeat DHW/LTHW Systems
Gas Fired Calorifiers
Boilers & Associated Equipment
Packaged Boiler Houses
Packaged Plant Rooms
Solar Energy Packages
Heat Pumps
Booster Sets & Pressurisation
Bespoke Engineering Packages



Arbe Integrated Engineering Ltd
Coal Lane
Causeway Foot
Halifax, HX2 9PG
Tel 01422 646865, Fax 01422 500018
mail@arbe.co.uk www.arbe.co.uk